

Zeal & Z2 Series



haskell

ON TIME. COMPLETE. CORRECT.

The Zeal series offers a robust table system built around the unique understructure and incredibly strong, high-design leg. The Z2 series is a close cousin to the popular Zeal series, offering an alternative that mirrors all of the aesthetic features while removing the understructure and providing a broader solution for corporate and educational applications.

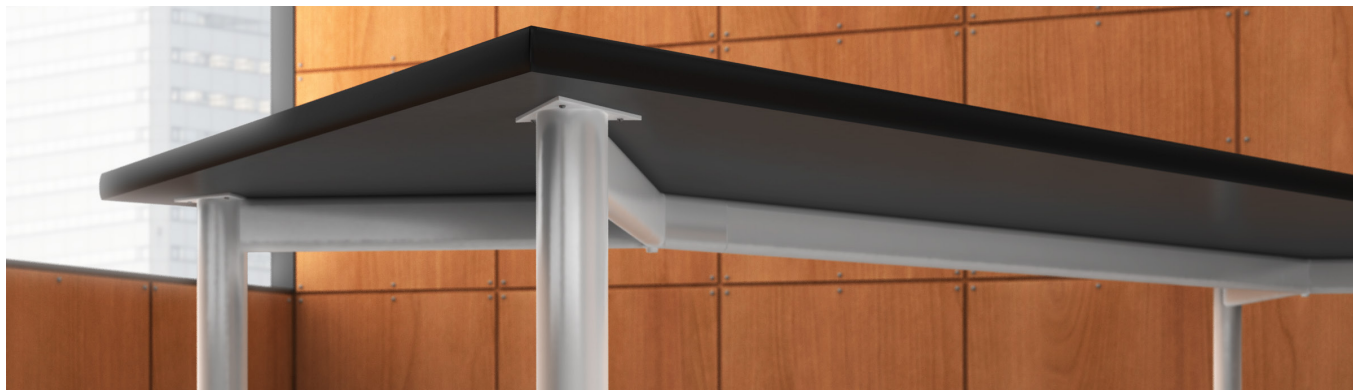
Zeal and Z2 offers a full range of table solutions, both highly versatile and equally customizable, for specialty spaces. With options for conference, multipurpose, and training rooms, these tables foster collaboration in corporate or educational interiors. A host of surface, support, and technical integration options further distinguish the Zeal and Z2 collections.



table system

The Zeal and Z2 series offers a system that can accommodate even the most demanding educational and workspace needs with its countless options and features. Available with casters, glides or even height adjustable legs, the Zeal tables system can be paired with a resin surface appropriate for science applications, or with the standard laminate top available with and without a solid wood edge, making Zeal and Z2 the perfect choice for all high traffic applications.

Structural Detail



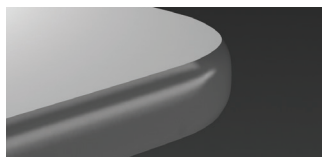
Zeal Series



Z2 Series

Top & Edge Styles

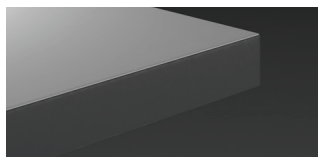
Modesty Panel



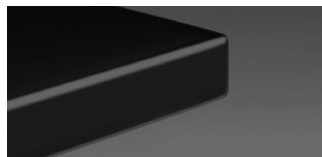
T-mold



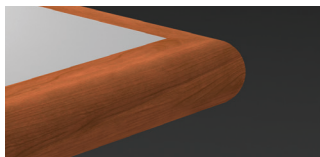
3mm



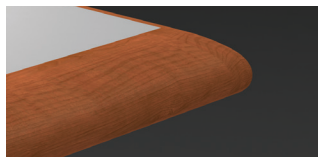
self edge



science epoxy resin



wood-bullnose

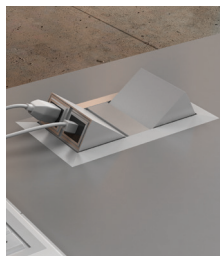


wood-knife



black mesh privacy

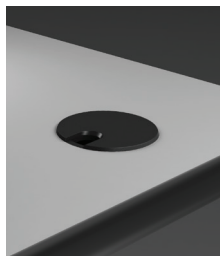
Electrical Options



power & data



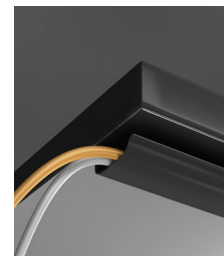
power & data



grommet



cable spine



wire manager